

# **21<sup>st</sup> Population Census Conference** **Analysis of the** **2000 Round of Censuses**

**November 19-21, 2003**  
**Kyoto, Japan**

## **The Census in the United States**

**Nancy Gordon**  
**Associate Director for Demographic Programs**  
**U.S. Census Bureau**

# The Census in the United States

---

**WHEN:** Taken once every 10 years since 1790

**WHY:** Required by the U.S. Constitution

**WHAT:** Collects data about people and how they live

**HOW:** Uses two basic questionnaires

## Short form subjects

Used for apportionment, redistricting, and allocating funding

## Long form subjects

Used to allocate funding, formulate social and economic policies, and enforce laws

# Census 2000

## Questionnaire Content

---

### Short form

All households were asked:

- Name
- Sex
- Age
- Relationship
- Hispanic origin
- Race
- Owner/renter status

### Long form

1/6 of households also were asked about subjects like:

- Education
- Disability
- Place of birth
- Employment
- Income
- House or apartment
- Number of vehicles

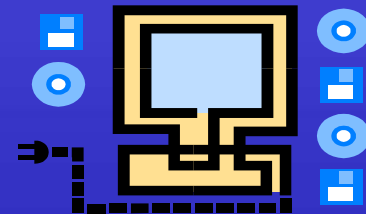
# Standard Census Data Products

---

*PRINTED  
REPORTS*



*SUMMARY  
FILES*



*PUBLIC USE  
MICRODATA  
SAMPLE  
FILES*



# Special Tabulation Program

---

**Purpose:** To meet specific needs for data not in standard census products

**Terms:** Defined by requestor who pays actual cost

- Uses:**
- To evaluate existing conditions
  - To analyze trends
  - To make informed decisions
  - To allocate resources
  - To comply with, or enforce, current laws and regulations

# *Some Recurring Federal Special Tabulations*

---

- **Equal Employment Opportunity (EEO) File**
- **Census Transportation Planning Package (CTPP)**
- **Administration on Aging (AoA) File**

# Equal Employment Opportunity (EEO) File

---

**Sponsors:** Four federal agencies

**Purpose:** To monitor employment practices and enforce civil rights laws in the workforce

**Content:** Race, Hispanic origin, and sex data by --

- Occupations
- Worksite and residence geography
- Education
- Industry

# Census Transportation Planning Package (CTPP)

---

**Sponsor:** States

**Purpose:** To improve roads, ease traffic, and reduce pollution

**Content:** Data about workers by --

- Place of residence
- Place of work
- Flows of workers between home and job

# Administration on Aging (AoA) File

---

**Sponsor:** U.S. government for use by states and local areas

**Purpose:** To coordinate a system of services for older people

**Content:** Demographic, social, economic, and housing data about people aged 60 and older

# Uses of Other Special Tabulations

---

- To locate new production plants, stores, and offices
- To find areas needing new child care centers
- To identify job training needs
- To target advertising
- To target areas where services are needed for low-income families
- To forecast future housing, education, and health care needs

***And many, many more.***

# The Census in the United States

---

**For more information about  
the U.S. Census,  
please visit**

**[www.census.gov](http://www.census.gov)**