
Measurement of Persons with Disabilities Statistics in the Philippines:

Recent Methodological Issues and Developments

Carmelita N. Ericta

Administrator
National Statistics Office
Philippines






OUTLINE OF PRESENTATION

1. Introduction
2. A Review of Concept of Disability Used During the Past Censuses
3. Recent Developments on the Concept and Categories of Disability
4. Pretest Results
5. Future Direction



Introduction

-  Census of Population – Primary Source of Information, conducted every ten years since 1980
-  The first census was conducted in 1903
-  One of the data items include since the 1990 Census is disability

Introduction

- 📁 In 2000, the proportion of PWDs in the Philippines was registered at 1.23 percent
- 📁 This figure was lower than
 - 10 percent – WHO prevalence rate estimate for developing countries
 - 2.9 percent – 2000 Philippine Department of Health (DOH) Prevalence Survey Result



Introduction

- 📁 The 2000 census figure (1.23 percent) was consistent with
 - 1995 Census – 1.34 percent
 - 1990 Census – 1.05 percent
- 📁 The discrepancy of census results with other estimates posed a challenge to the PNSO
- 📁 This paper presents the recent developments on the concept and methodology of measuring PWD statistics



A Review of the Concept ...

Census Definition

Disability - a person with has any restriction or lack of ability (resulting from an impairment) to perform an activity considered normal for human being

Impairments

Physical

Mental

Sensory Motor Impairment




Annex 1. Questions and Different Categories of Disability Adopted During the 1990 CPH and 1995 POPCEN

1990 Census of Population (CPH)	1995 Census of Population (POPCEN)
<p>Does ____ have any physical or mental disability? (If YES) What type of disability does ____ have?</p>	<p>Does ____ have any problem with his/her eyes, ears, speech communication, legs, arms or any combination of these impairments? (If YES) What type of disability does ____ have?</p>
<ul style="list-style-type: none"> 1 Blindness 2 Deafness 3 Muteness 4 Deafness/Muteness 5 Speech Impairment 6 Mental Illness 7 Mental Retardation 8 Orthopedic Handicap 9 Multiple Disability 0 Others, specify 	<ul style="list-style-type: none"> 01 Totally Blind 02 Partially Blind 03 Low Vision 04 Totally Deaf 05 Partially Deaf 1 (Cannot hear with one ear but with moderate hearing loss on the other ear) 06 Partially Deaf 2 (Can hear speech but cannot discriminate the words) 07 Mute 08 Speech Defect 09 No Arm (Loss of one or both arms/hands) 10 No Leg (Loss of one or both legs/feet) 11 Paralysis of one or both upper extremities 12 Paralysis of one or both lower extremities 13 Paralysis of one arm and one leg 14 Quadriplegic (Paralysis of all four limbs) 15 Mental Retardation 16 Mentally Ill 17 Others, specify



A Review of the Concept ...

In an Effort to improve the recent concepts and methodologies

 In 1999 Public Hearing was conducted sponsored by the Philippine Congress

- National Commission for the Welfare of Disabled Person (NCWDP)
- Catholic Handicapped Development Inc.
- Department of Education
- Department of Social Welfare and Development
- Department of Health



A Review of the Concept ...

Recommendations raised during the public hearing

 Adopt questions which are not complicated

“ Does _____ have any physical or mental disability? If yes, what type of disability does _____ have?”

2000 Census of Population and Housing

 Categories to be used should be simple

Annex 2. Different Categories of Disabilities Adopted During the 2000

Code	Description	Short Name
01	No useful sight in any of the two eyes. Persons may have some light perception, but do not have usable sight. They need Braille materials for reading.	Tot-Blind
02	With better eyesight than totally blind: can distinguish objects in front of him. However, even with eyeglasses cannot distinguish large letters.	Part-Blind
03	With the better eye, even with eyeglasses, cannot distinguish regular size letters. Practically, can only read the bigger headlines in the newspapers.	Low Vision
04	Cannot realize any regular sound. Practically the person does not react when somebody claps his hands behind his back.	Tot-Deaf
05	Can hear speech but cannot discriminate the words.	Part-Deaf



Annex 2. Different Categories of Disabilities Adopted During the 2000 (continued)

Code	Description	Short Name
06	Person can understand words only if spoken very loud or close to the ear and has severe difficulties if there are noises of other people speaking in the room.	Hard-Hear
07	Person at least 15 years old, is object to ridicule or has severely limited job opportunities because of either a general stammering problem which makes normal speech extremely difficult or a cleft-palate or hare-lip that cannot be solved a current medical procedures.	Oral Defect
08	Person has only one useful hand.	One Hand
09	Person has no useful hands.	No Hands
10	Person has only one useful leg: walks with crutches and/or artificial leg and/or braces.	One Leg
11	Person has no useful legs or two legs unusable.	No Legs
12	Regular/Mild cerebral palsy: person can still walk and do most activities or might only be slightly awkward and require no special assistance.	CR-Quadrip



Annex 2. Different Categories of Disabilities Adopted During the 2000 (continued)

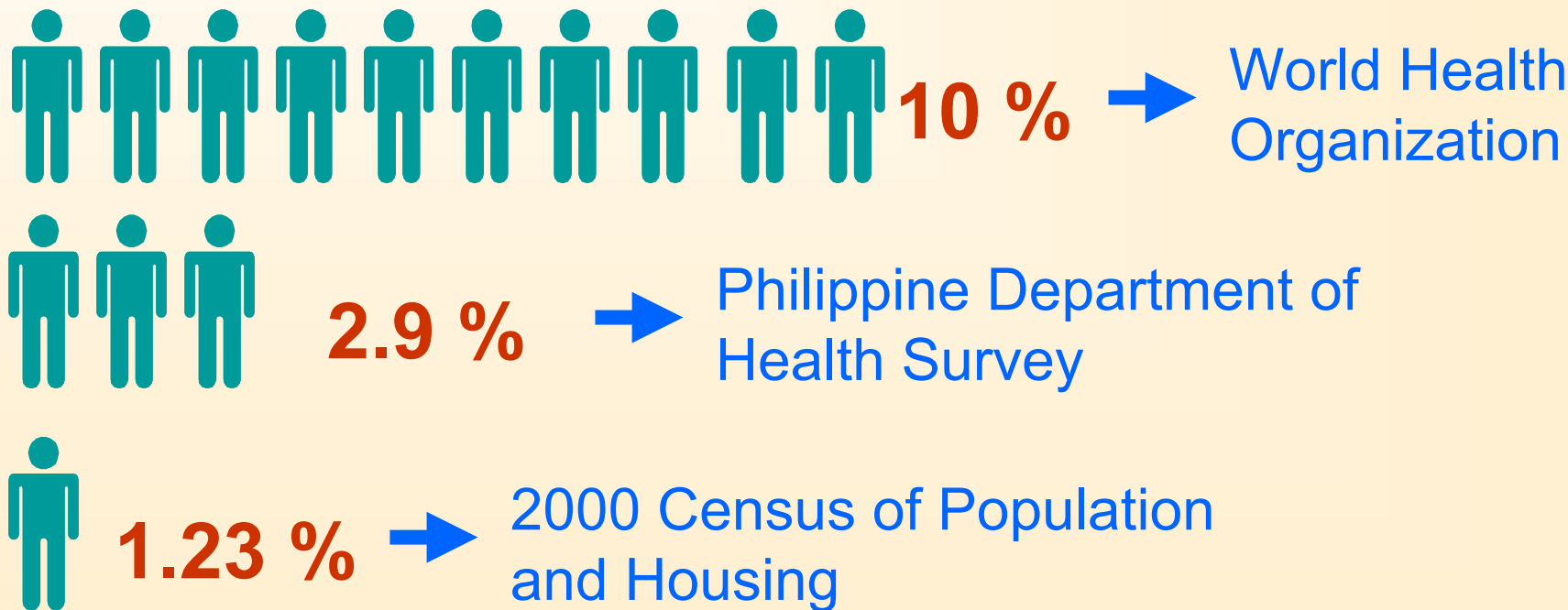
Code	Description	Short Name
13	Severe cerebral palsy: person is severely affected by the cerebral palsy or might be unable to walk and need extensive, lifelong care.	CS-Quadrip
14	Regularly intellectually impaired: can be trained to be toilet trained, to wash himself, eat on his own and follow single instructions.	IR-Retarded
15	Severely intellectually impaired: cannot be toilet trained, eat alone, severe autism, etc.	IS-Retarded
16	Regularly impaired by mental illness: actually under psychiatric care or should be under psychiatric care as well as patients who recovered within the last three years.	PR-Mentally III
17	Severely impaired by mental illness: persons needing hospitalization or having been hospitalized within the last three years.	PS-Mentally III
18	Regularly multiple impaired	MR-Impairment
19	Severely multiple impaired	MS-Impairment



A Review of the Concept ...

The differences of the results could be attributed to the operational definition as well as the questions and categories used during the census

Proportions of PWDs in the Philippines



Recent Developments

.... On the concepts and Categories of Disability

- The PNSO planned to conduct another mid-decade census of population in 2005, however due to budgetary constraints, this will no longer be conducted.
- The next census of population will be scheduled in 2010.
- Convening of Inter-Agency Task Force (IATF) to assist the Philippine National Statistics Office on the technical and logistics requirements



Annex 2. Composition of the 2005 POPCEN Inter-Agency Task Force

Chair	National Statistics Office
Co-Chairs	Commission on Population
	Department of Budget and Management
Members	National Economic and Development Authority
	University of the Philippines-Population Institute
	University of the Philippines-College of Mass Communication
	Department of the Interior and Local Government



Annex 2. Composition of the 2005 POPCEN Inter-Agency Task Force (continued)

Members	Department of Education
	Department of Social Welfare and Development
	DOLE-Bureau of Labor and Employment Statistics
	Department of Environment and Natural Resources
	Department of National Defense
	Department of Foreign Affairs
	Commission on Elections



Annex 2. Composition of the 2005 POPCEN Inter-Agency Task Force (continued)

Members	National Council for the Welfare of Disabled Persons
	National Commission on Indigenous Peoples
	Philippine Information Agency
	Congressional Planning and Budget Department
	Union of Local Authorities of the Philippines
	National Statistical Coordination Board
	Statistical Research and Training Center



Recent Developments

.... On the concepts and Categories of Disability

- The Inter-Agency Task Force (IATF) Sub-Committee on Concepts and Definitions was created to finalize data items to be collected
- The IATF Sub-Committee suggested to adopt the following questions used by Australian Bureau of Statistics (ABS)

Does he/she have difficulty in self-care, mobility or communication? What type of assistive device does he/she use?



Recent Developments

.... On the concepts and Categories of Disability

- The question reformulated by NCWDP was

“Does ___ have difficulty in seeing, hearing, communication, moving/mobility, speech/stuttering/congenital cleft lip/palate, behavior, and learning, applying knowledge and general tasks and demands of school, community, home and workplace?”



Recent Developments

.... On the concepts and Categories of Disability

- The IATF has simplified the question

“Does any member have problem/difficulty in seeing, moving, communication, hearing, mental behavior, any two or more difficulties? If yes, how many?”

- The IATF includes the question as a household indicator in the first pretest of the 2005 POPCEN questionnaire
- Series of Pretests were conducted to test the effectiveness of the questions



Pretest 1

The plan was just to prepare a frame of households with PWDs so that follow-up surveys with detailed information on PWDs can be done in the future. Separate surveys on PWDs were recognized, as it is not possible to include several questions in the census.



Pretest 1 Results

Held in two urban barangays in the City of Manila,
March 11-12, 2004

Table 1. Households Reported to have at least one Member with Disability, Pretest 1

Type of Disability	Brgy. 418	% to Total Households	Brgy. 424	% to Total Households
No. of Households Interviewed	62		98	
Difficulty/Problem in:				
Seeing	4	6.5	8	8.2
Hearing	1	1.6	6	6.1
Moving	1	1.6	4	4.1
Communication	0	0.0	6	6.1
Mental Behavior	0	0.0	1	1.0
Any 2 or more Difficulties	2	3.2	2	2.0



Pretest 1 Results

The following major observations were raised

- To be able to determine how many of the household members have difficulty in each category, the enumerators have to go back to the listing of the household members and ask the members one by one, thus, prolonging the time of interview;
- No profile of the disabled population can be derived from the results since the question was considered only as a household indicator.



Pretest 2

the question on disability was asked to individual household members during the second pretest. With some of the ICF classifications being considered, the categories were revised as follows:

“Does _____ have difficulty in seeing, hearing, communication, mental behavior, managing daily routine/moving/self-care?”



Pretest 2 Results

One typical urban and one typical far-flung rural barangays
in the nearby province of Rizal : March 25-26, 2004

Table 2. Household Population with Disability, Pretest 2

Type of Disability	Brgy. Daraitan	% to Total Population	Brgy. Muntindilaw	% to Total Population
Total Household Population	310		203	
Difficulty/Problem in:				
Seeing	11	3.5	7	3.4
Hearing	3	1.0	2	1.0
Communication	1	0.3	0	0.0
Mental Behavior	2	0.6	1	0.5
Managing daily routine/moving/self-care	4	1.3	2	1.0
Persons with one disability	13	4.2	7	3.4
Persons with multiple disability	2	0.6	2	1.0
Total no. of persons with disability	15	4.8	9	4.4



Pretest 2 Results

Findings of the second pretest

- The enumerators have to repeat the categories to all household members who are sometimes annoyed or offended due to the sensitivity of the question and the absence and non-applicability of these incidents to most of the households
- The difficulty of asking the category on mental behavior which was observed to be more offending than the other categories.



Pretest 3

- The IATF recommended asking the question only once to the respondent then probe and exhaust all the information that may lead to any member with functional difficulty.
- The suggestion was to instruct the enumerator to ask the question if there is anyone in the household with difficulty in seeing, communication, hearing, and so on, and then, ask the respondent who among the household members have such difficulty



Pretest 3 Results

Two rural barangays in the Province of Tarlac April 5-6, 2004

Table 3. Household Population with Disability, Pretest 3

Type of Disability	Brgy. Pilpila	% to Total Population	Brgy. Cutcut	% to Total Population
Total Household Population	149		123	
Difficulty/Problem in:				
Seeing	10	6.7	4	3.3
Hearing	2	1.3	1	0.8
Communication	3	2.0	1	0.8
Mental Behavior	0	0.0	0	0.0
Managing daily routine/moving/self-care	3	2.0	1	0.8
Persons with one disability	16	10.7	5	4.1
Persons with multiple disability	1	0.7	1	0.8
Total no. of persons with disability	17	11.4	6	4.9



Pretest 2 Results

Findings of the third pretest

- One major finding during the third pretest is that the word "disability" in the heading of the question in the questionnaire has somehow affected the way the question is asked by the enumerators
- the IATF suggested that NCWDP should look for "milder" term for disability in the heading so that the enumerators will no longer mention such sensitive word to the respondents. NCWDP recommended replacing the word disability to "functional difficulty" to avoid bias.



Pilot Census

- After the series of pretests, a pilot census was conducted in three municipalities in the Philippines:
- The municipalities of Piddig and Carasi in Ilocos Norte (Luzon) with an estimated 4,270 households and 399 households, respectively, and the municipality of San Isidro in Davao Oriental (Mindanao) with an estimated 6,574 households.
- The objective of the pilot census is to test the effectiveness of the census instrument on the data item for disability and other variables in the questionnaire



Pilot Census Results

Table 4. Household Population with Disability, Pilot Census

Type of Disability	Province of Ilocos Norte		Province of Davao Oriental	
	Mun. of Piddig	% to Total Population	Mun. of Carasi	% to Total Population
Total Household Population	16,182		1,189	27,576
Difficulty/Problem in:				
Seeing	449	2.8	37	3.1
Hearing	231	1.4	15	1.3
Communication	61	0.4	7	0.6
Mental Behavior	38	0.2	5	0.4
Managing daily routine/moving/self-care	126	0.8	5	0.4
Persons with one disability	470	2.9	45	3.8
Persons with multiple disability	143	0.9	8	0.7
Total no. of persons with disability	613	3.8	53	4.5



Pilot Census Results

- The use of dialect translations, especially for major and sensitive data items such as disability, was proven necessary
- extensive consultation and partnership with other agencies and the local government units were also seen as essential strategies to ensure the success of the undertaking .
- to further simplify some of the categories of disability such that: *communication* be replaced with *speaking*; *mental behavior* instead of *mental functioning*; and *moving* rather than *managing daily routine/moving/self care*



Post Pilot Pretest Results

The post-pilot pretest was conducted in Rodriguez, Rizal on July 27, 2004.

Table 5. Population 5 Years Old and Over with Functional Difficulty, Post-Pilot Pretest

Type of Disability	Number	% to Total Pop'n 5 Years Old & Over
Seeing	17	7.1
Hearing	7	2.9
Speaking	2	0.8
Moving	2	0.8
Mental Functioning	1	0.4
Total Pop'n 5 Years Old & Over with at least one Functional Difficulty	21	8.8
Total Pop'n 5 Years Old & Over	240	



Future Direction

- The process of measuring PWD statistics in the Philippines has improved if the sole basis is the increasing proportion of PWDs that was obtained from the series of field tests

Table 6. Proportion of Household Population with Disability, Pretests and Pilot Test

Type of Disability	Pretest 2	% to Total Population	Pretest 3	% to Total Population	Pilot Census	% to Total Population	Post-Pilot Pretest	% to Total Population*
Total Household Population	513		272		44,947		240 *	
Persons with one disability	20	3.9	21	7.7	1,108	2.5	20	8.3
Persons with multiple disability	4	0.8	2	0.7	303	0.7	2	0.8
Total no. of persons with disability	24	4.7	23	8.5	1,411	3.1	22	9.2

* Household Population 5 Years Old and Over



Future Direction

- In planning for the 2010 CPH, awareness campaign and activities that are geared towards addressing the barriers in the enumeration of PWDs should be undertaken
- Extensive consultation at the grassroots level should be sustained to raise understanding of the purpose of the census and its potential benefits especially to the PWDs
- If it is not financially feasible to include this variable (disability) in a census, the challenge is for the PNSO and other concerned agencies to explore cost effective alternative methodologies



Future Direction

- One possible option is the inclusion of disability indicator in the listing operation for the Master Sample Frame
- With the PWD indicator in the Master Sample, follow-up surveys that are geared towards obtaining detailed information on the PWDs can be made
- Moreover, available registration lists of PWDs at the DOH and Local Government Units (LGUs) can be explored as potential sampling frame for detailed surveys on PWDs.



Future Direction

In all of these issues and developments, the PNSO will continue to quest for ways and means to improve data collection of statistics which will uplift the condition of the Filipino people. Improvement of disability statistics will definitely make a difference.





Thank You...