



23rd Population Census Conference
Utilization of the 2000 and 2005 Rounds of Asia-Pacific Censuses
Christchurch, New Zealand, 16-18 April 2007

**Utilization of 1998 Population Census and
Preparation for the 2008 Population
Census in Cambodia**

by SAN Sy Than, DG
Hor Darith, Director,
National Institute of Statistics, Ministry of Planning,
Cambodia

I. Background(1)

- **Pop. Censuses and surveys** in Cambodia: Pop. Count **1921**, DS **1946**, DS **1958**, DS **1959**, First Pop. Census **1962**, Pop. Count **1980**, DS **1996**, 2nd Pop. Census **1998**, CIPS **2004**
- There was a census gap of 36 years between 1962 and 1998.
- The 1998 General Population Census was greatly supported by UNFPA

I. Background(2)

- Statistics law enacted in May 2005
- Sub-decrees implementing the Statistics Law prepared, some in force already
- Statistics Master Plan for 2006-2015
- Sub-decree on specification of census date, organization and functioning of 2008 General Population Census in force 30 January 2006.

II. Uses of 1998 population census (1)

- **SEDP, NPRS, CMDG** (106 Indicators)

All the 3 documents related to poverty reduction

- **NSDP** adopts the CMDGs and the Rectangular Strategy as guiding principles

- Used for other programmes such as Public Investment Programmes, studies and reseaches.

II. Uses of 1998 Pop census (2)

Data from census and several analytical topics are useful for **policies and programs**.

Census data used for **population policies**.

Results of the 1998 Census incorporated in the **SEDPII** of Cambodia.

High rate of population growth revealed by the 1998 census was recognized as a barrier to poverty reduction and development.

III. Uses of 1998 Census for planning

Formulation and implementation of **social policies** allows sex-disaggregated gender analysis.

Urban plans for Phnom Penh and other urban centers use the 1998 Census data of Cambodia.

Policy paper to **reclassify urban areas** based on 1998 census indicators.

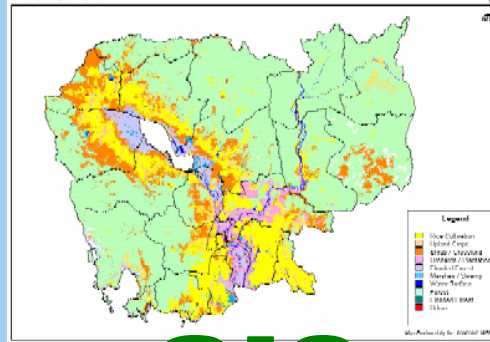
IV. Advanced uses

- Some advanced uses e.g. for:
 - poverty mapping,
 - nutrition mapping,
 - education mapping,
 - Atlas of Cambodia etc.

POVERTY MAP: METHODOLOGY



CSES 97

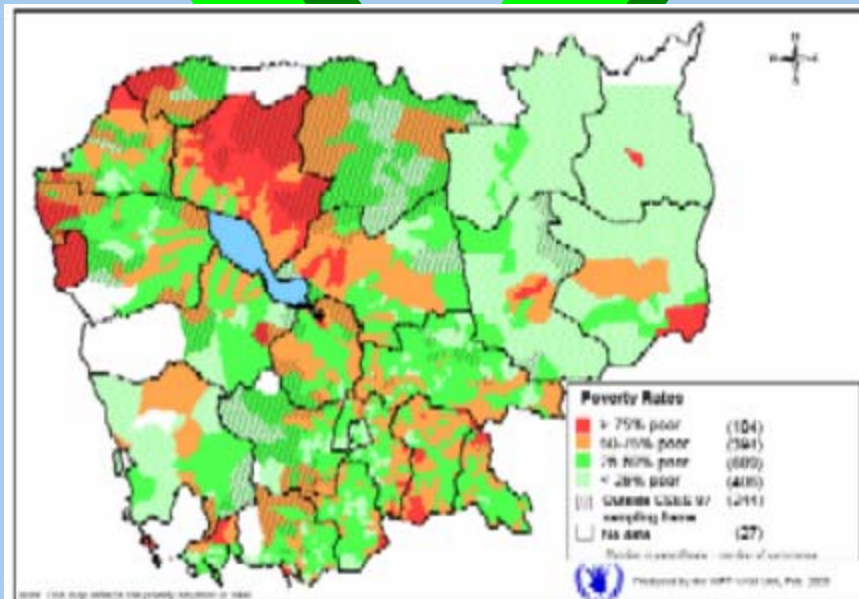


GIS



CENSUS 98

SMALL AREA ESTIMATION TECHNIQUE



V. Why we need the Census in 2008 (1)

- Statistics Law, states that the Census is to be conducted at least once every **10 years**.
- 2008 Census will provide **timely** benchmark data for monitoring and assessing the **NSDP, CMDG** and **poverty reduction**.
- Data for **sectoral planning**.

V. Why we need the Census in 2008 (2)

- 2008 Pop. Census will update and provide comparative data with Population Census 1998.
- **Small area statistics** (village level or EA level). We will provide more data at sub-national levels to serve the decentralization policies of RGC.
- New **urban classifications** for 2008 Census.
- Census date: 3 March 2008

VI. Funding of 2008 population census

- Cost about 7million US\$. We currently have UNFPA, JICA, Government of Japan, German Government and Royal Government of Cambodia assisting the 2008 Population Census.
- UNFPA:1,464,711US\$, JICA:568,230US\$, Counter-Part Funds of Japan: 1,686,656US\$, German Government:1,549,000US\$ and RGCambodia:746,758US\$. In addition: Statistics Center donated by Japan (CPF): 885,827US\$.
- UNFPA, SBJ and JICA provide technical assistance (short term).

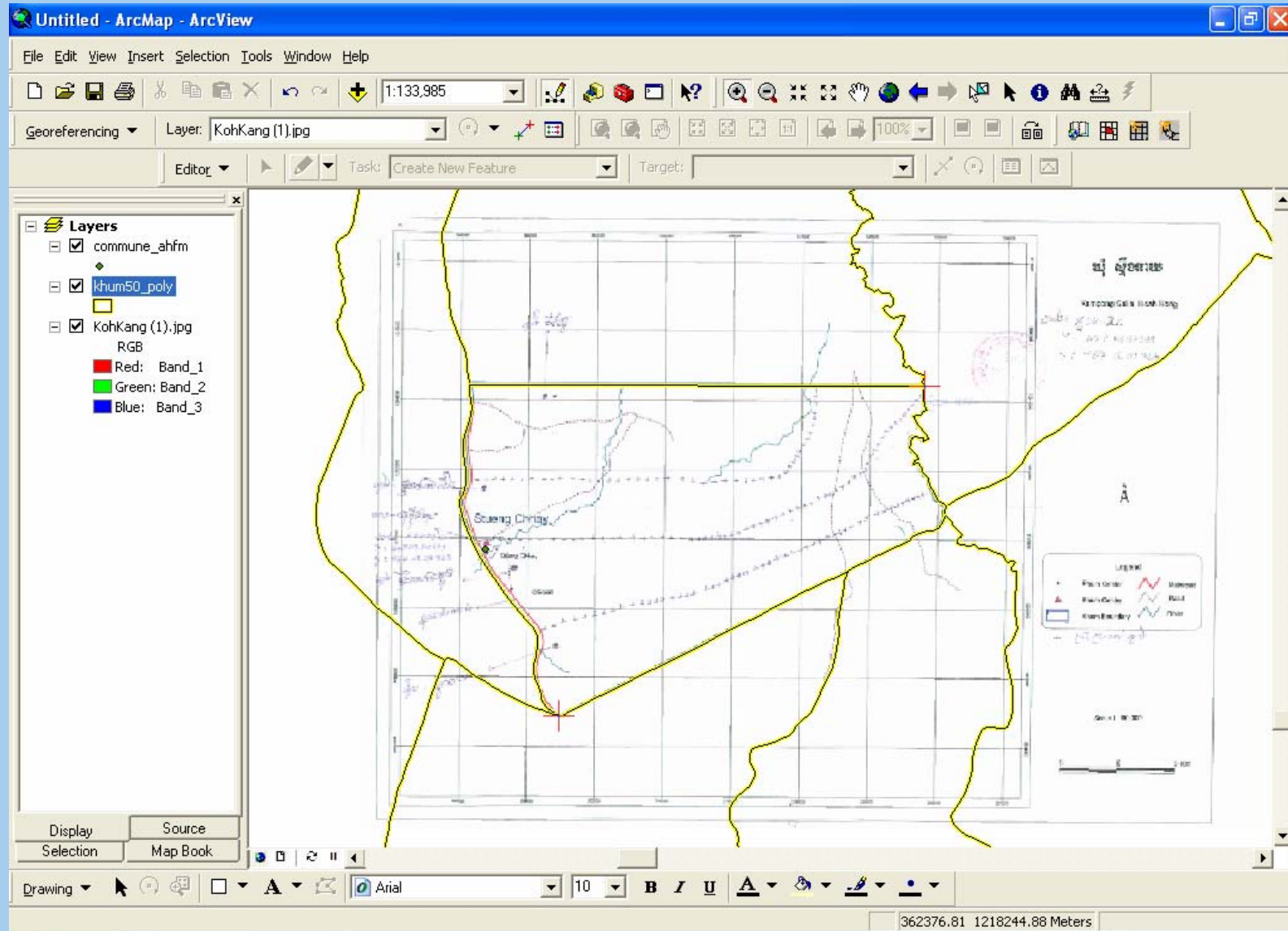
VII. Organization of 2008 General Pop. Census

- The National Census Committee is chaired by D.P.Minister, Minister of Interior and Senior Minister of Planning as vice-chairman
- Secretaries of State of relevant line ministries are members with DG, NIS as Secretary (16 members).
- DG, NIS: DG of Census

VIII. 2008 Census Cartography

Cartographic Preparation

- Enumeration Area (EA) mapping
(500 persons or 100 households per EA)
- Village mapping (one village may have more than one EA).
- EA map has identifiable boundaries, which do not overlap and include notable landmarks.
- Village location were plotted at actual location by using GPS.



Untitled - ArcMap - ArcView

File Edit View Insert Selection Tools Window Help

Georeferencing Layer: KohKang (1).jpg

Layers

- commune_ahfm
- khum50_poly
- KohKang (1).jpg
 - Red: Band_1
 - Green: Band_2
 - Blue: Band_3

Editor

- Start Editing
- Stop Editing
- Save Edits
- Move...
- Split...
- Divide...
- Buffer...
- Copy Parallel...
- Merge...
- Union
- Intersect
- Clip...
- More Editing Tools
- Validate Features
- Snapping...
- Options...

Map Content

Legend

- Phum Center
- Khum Center
- Khum Boundary
- Microroad
- Road
- Flow

Scale 1:10,000

365672.15 1215382.96 Meters

start | Untitled - ArcMap - Ar... | Document1 - Microsof... | 2:21 PM

IX. Training (1)

Four training levels:

- First level training: Regional Officers (ROs) and Trainers of Trainers (ToTs) were trained first (100 persons) in central census office.
- Second level training: Province Census Officers (48 persons) will be trained at the Central Census Office.

IX. Training (2)

- Third level training: Trainers of field staff will be trained at Province Census Office.
- Fourth level training: Supervisors and Enumerators (40,000 field staff) will be trained at selected venues in districts.

There will be refresher training for ROs, TOTs, and PCOs before the census.

Conclusions

- 2008 Population Census in Cambodia is very needed by all users from Royal Government and other users
- 2008 Pop. Census will further strengthen the statistical capacity of NSS will raise the status of NIS
- 2008 Pop. Census is the more complete, technically more advanced using the development in IT in the census mapping, digitizing and will be disseminated in a technically advanced manner.