

New Initiatives in the Last Population and Housing Census of Fiji - 2007

Epeli Waqavonovono
Deputy Government Statistician and Census Director
Fiji Islands Bureau of Statistics

Outline

1. Obtain Benchmark Information
 - Informal Sector Employment
 - Tourism Related Employment
 - Workplace Location
2. Use of GPS Technology
3. Poverty Maps

Informal Sector Employment Information

- Substantial Informal Sector in the Fiji economy.
- Planners believe that the informal sector can absorb more of our new entrants to the labor force
- Limited information available to guide policy and project formulation
- Coding based on Occupation, Industry and Location of Workplace Information

Tourism Related Employment

- Biggest Foreign exchange earner
- Limited information available and previous estimates based on what was available
- Required to inform of assistance required to increase local participation in tourism activities
- Aim to retain a bigger portion of Tourism dollar in Fiji

Location of Workplace

- Transport Planning
- Information requirement for Issue or Renewal of Licenses to Transport Providers
- Gauge Housing Demand

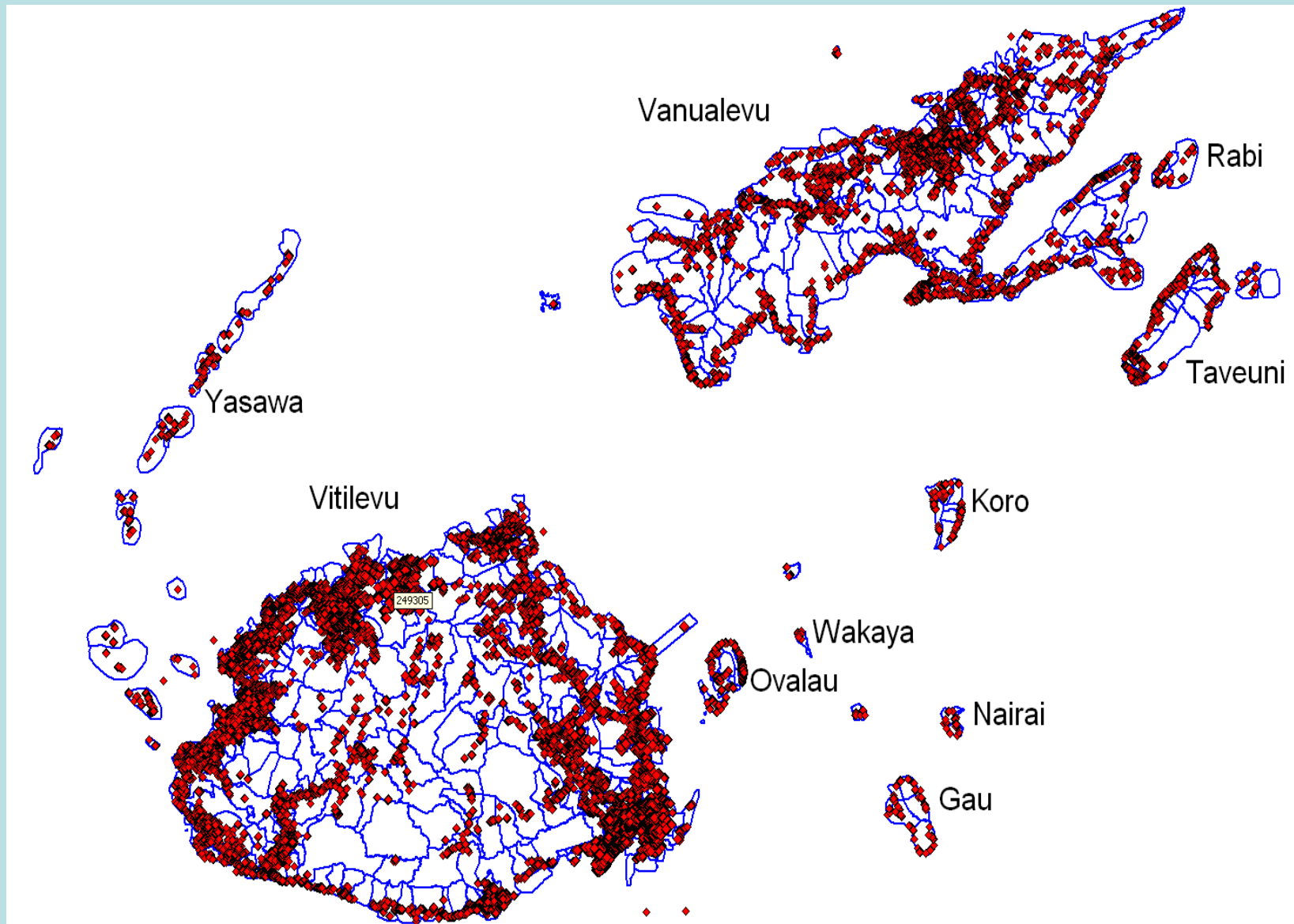
GPS Technology

- GPS Waypoint for each household was gathered
- GPS location data to meet the huge demand for small area data
- Useful in Disaster Management such as for Relief Supplies and Rehabilitation work
- Useful in identifying vulnerable areas in cases of disease outbreak

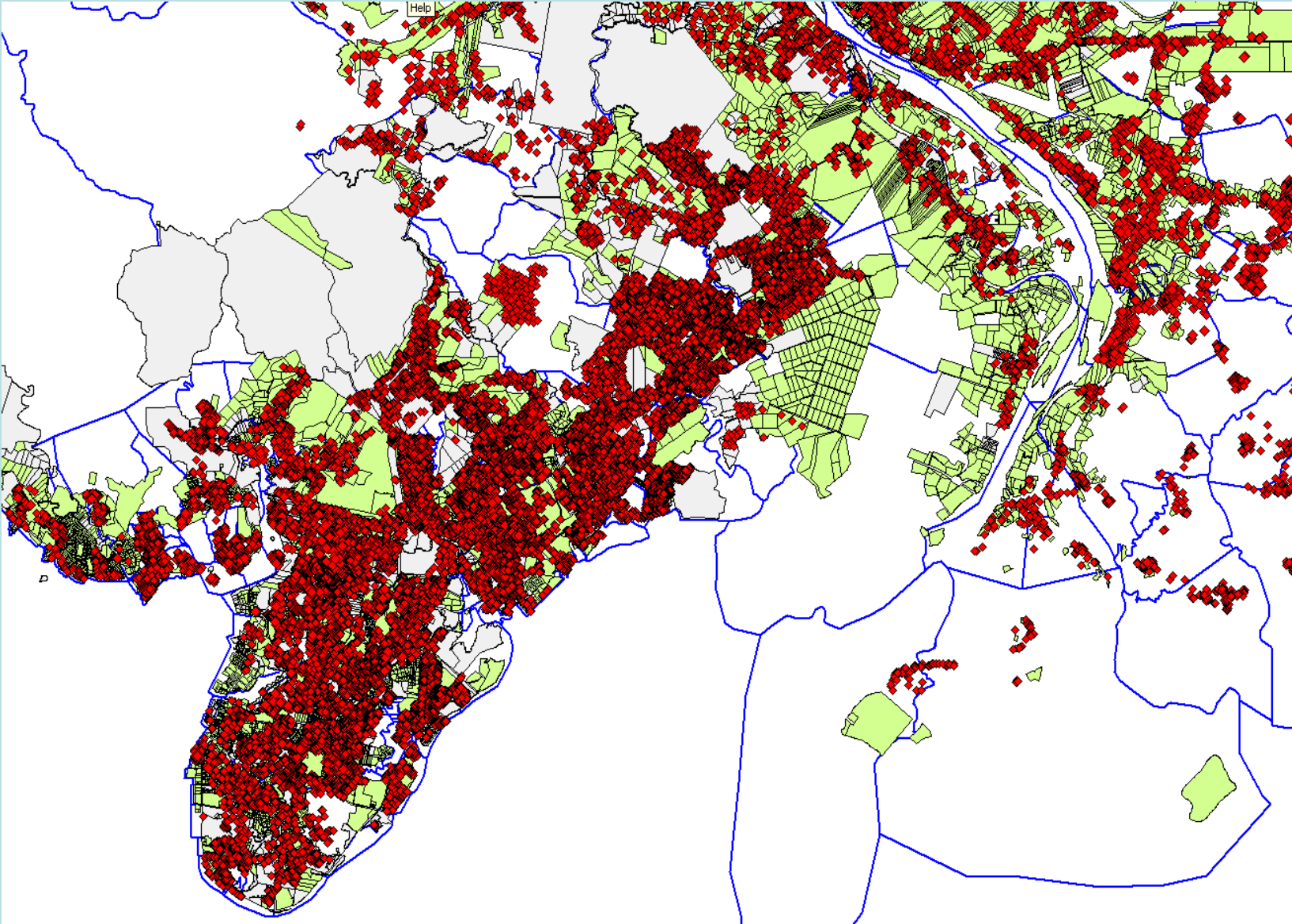
GPS Technology

- Identifying Poverty concentrations
- Identify areas of greatest need for safe water supply and improved sanitation
- Overcome issues related to differing boundaries, e.g. Police, health, Education (useful in recent zoning of schools)

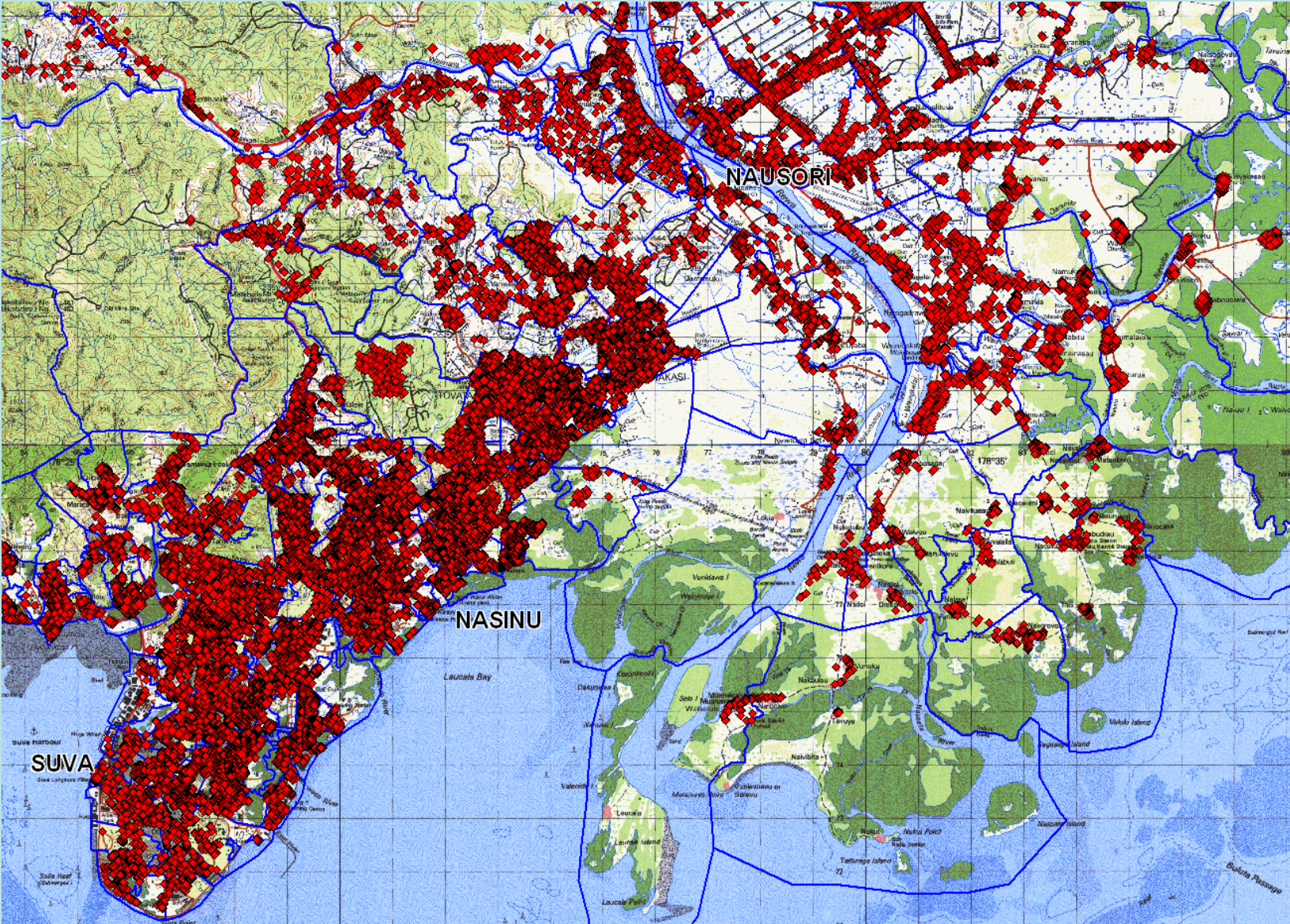
GPS WAYPOINTS – EA BOUNDARIES



GPS WAYPOINTS –LAMI_SUVA-NAUSORI CORRIDOR – CADASTRAL BACKDROP



SUVA-NAUSORI CORRIDOR GPS WAYPOINT – TOPO MAP



ENUMERATION AREA – CADASTRAL BACKDROP



Poverty Mapping

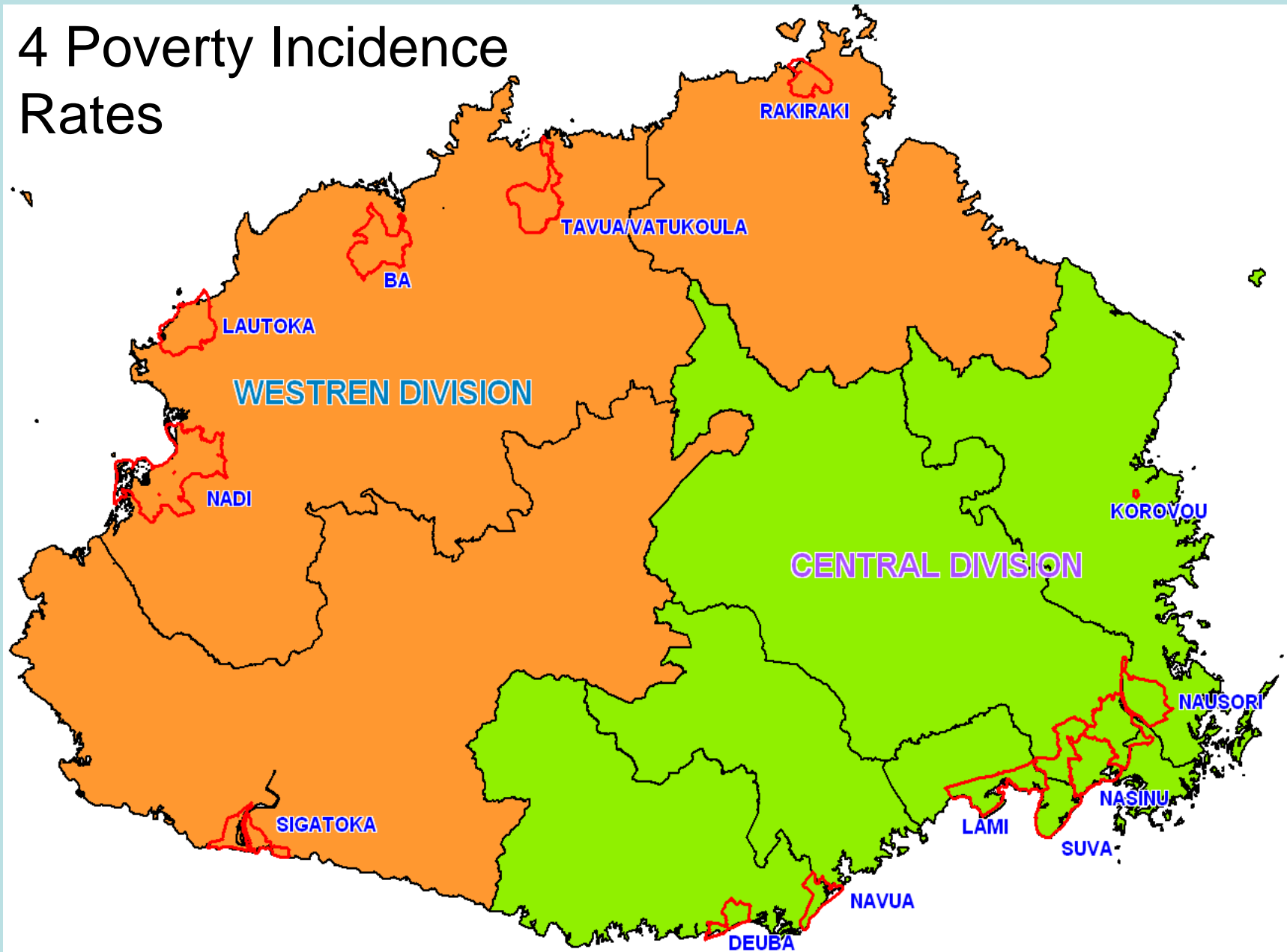
- Poverty Maps to provide poverty incidence rates at lower level of geography
- This is to ensure a more targeted response to poverty alleviation programs
- Poverty alleviation is key government policy with a substantial annual budgetary allocation

Poverty Mapping

- Provide information needs of donors who contribute to funding programs aimed at achieving the MDGs
- Involved linking data from 2008-09 HIES and 2007 Population Census
- Appropriate model from HIES is imputed into Census
- Estimates at lower geographical level produced and mapped

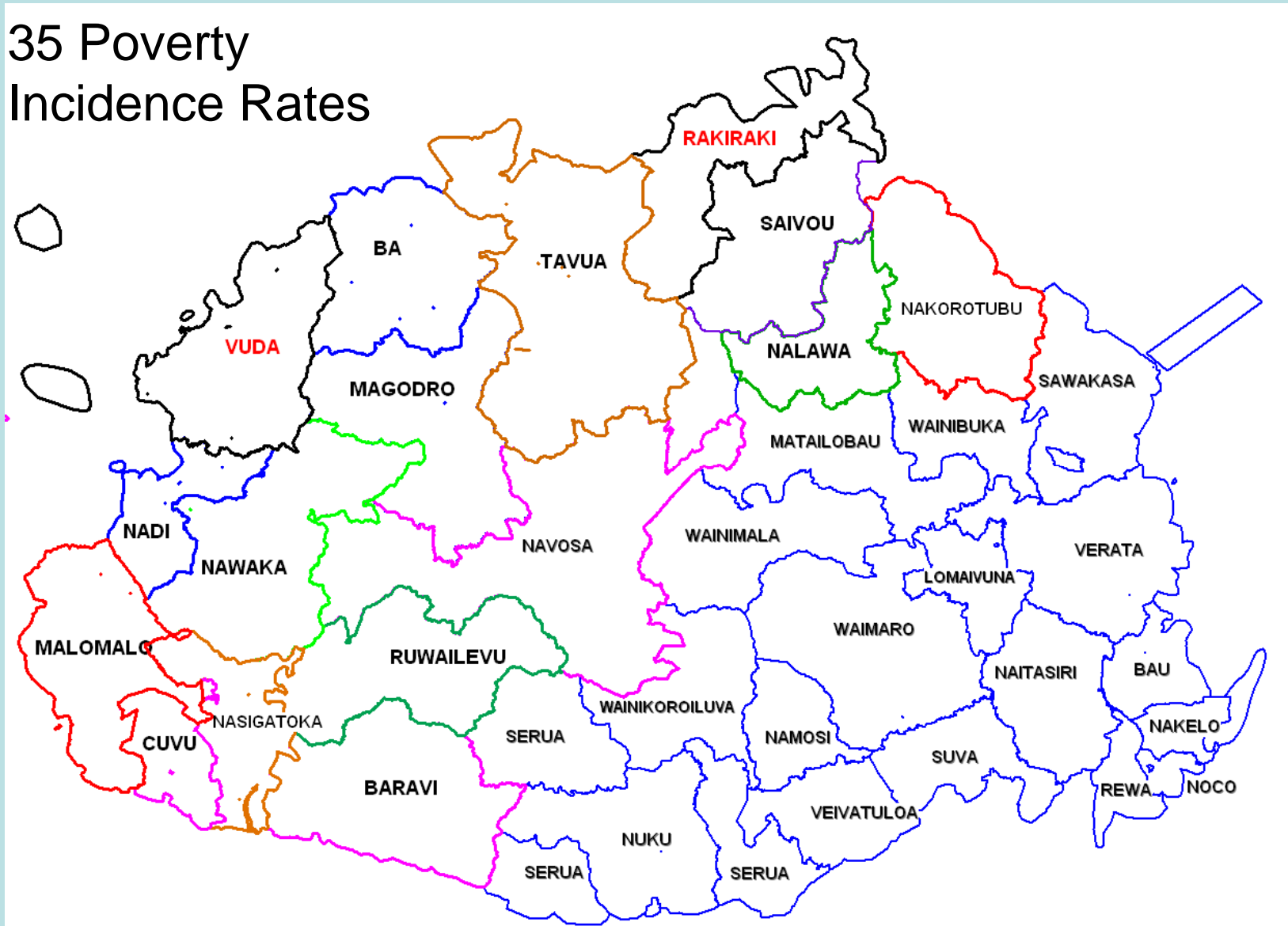
PROVINCIAL AND URBAN BOUNDARIES OF VITI LEVU

4 Poverty Incidence Rates



BOUNDARIES WITH POVERTY RATES AVAILABLE

35 Poverty Incidence Rates



Issues

- The cleaning process for GPS location data is tedious hence took a fair bit of time to get done. Data had to be provided as provisional for a longer time period
- Experiences from the 2007 Census has provided valuable lessons for future census taking
- Our first mini-census is planned for 2012

Thank You