

Planning Japan's 2000 Population Census

Yasuo Ishida
Director for Planning
Population Census Division
Statistics Bureau
Japan

Introduction

1 The next Population Census of Japan (hereinafter referred to as “the Census”) is scheduled to be taken as of 1 October, 2000. The Census of Japan has been conducted in the years ending with 0 and 5. The former is called the full-scale Census and the latter, the simplified Census. The difference between the both Censuses is the number of topics surveyed. In the last several Censuses, the full-scale one covered 22 topics, and the simplified one 17 topics. The topics, even in the full-scale, are restricted to basic items in the demographic, economic and social fields. Housing items are limited. Detailed housing items are covered by the Housing and Land Survey which is taken with a large sample in the years ending with 3 and 8. That is why the Census of Japan has not been named the Population and Housing Census.

2 The data from the 2000 Census are quite essential to the national planning toward the 21st century. The time left before its taking is only two years. The Statistics Bureau (hereinafter referred to as “the Bureau”) has made continuous efforts to draw out the basic design in the Committee for Planning the Census headed by the Director-General of the Bureau. On the other hand, the Bureau has held several meetings with users such as ministries and academic researchers to grasp what data they need, while it has examined what methods should be adopted for smooth field-enumeration by discussing with persons-in-charge of local organizations. Two pilot surveys have been already carried out to examine questionnaire forms, method of enumeration, etc.

3 This paper shows the process of the Census planning, major points to be examined and courses to be adopted for the 2000 Census.

Topics to be investigated

4 Because the topics, especially the questionnaire design are the most fundamental and crucial factor that influences the whole process of the Census operation, it is necessary to decide without delay what topics should be investigated in the next Census.

5 The topics investigated in the 1990 full-scale Census are in Annex 1. Prior to the consideration of the topics, we collected user-needs regarding the next Census. As a result, many and various requests were submitted to the Bureau. We are determining the Census topics according to the following criteria:

- a) necessity of investigating in the Census,
- b) usefulness for administrative use at national and local levels,
- c) easy-understanding by all respondents,
- d) public feeling to privacy protection,
- e) capacity of tabulation,
- f) others

6 The following matters were planned to be examined in the third pilot survey to be taken this November. Discussions were made at a workshop where economists, demographers, sociologists and statisticians took part in.

<Items for introduction >

- a) number of persons temporarily living away from home
- b) usual residence of sons or daughters of the household head, living in different households
- c) employment status: "regular or temporary" employees and their work hours
- d) period of living in the present house

<Items for abolition>

- e) commuting time to the place of work or school
- f) number of dwelling rooms

Among the above-mentioned items, "number of persons temporarily living away from home" is considered to be difficult to be actually tested in the third pilot survey because of difficulty of giving a clear definition.

Method of collecting questionnaires from households

7 The collection method which has been adopted traditionally in the Census of Japan is as follows: enumerators visit each household in their enumeration district to deliver the questionnaires, and visit again after the Census date to receive the questionnaires filled in by households and to examine them on the spot whether there are any omissions or errors. This method has been believed to be the best for ensuring full coverage in the enumeration and complete responses in the questionnaires. The collection method to be taken in the 2000 Census is expected to be basically similar to this one.

8 In the recent Censuses, however, some troubles came to occur at the time of collecting the questionnaires, because households who did not want their questionnaires seen by the enumerators for privacy reasons were increasing. To meet with this matter, households who do not want their questionnaires seen by the enumerators, are allowed to submit the questionnaires enclosed in the brochures on which the instructions for filling in the questionnaires are described. In this case, it is the households who decide to enclose the questionnaires or not, when they submit them to the enumerators.

9 This method, however, has become not to satisfy the households who fear that the enclosed submission might cause to lose good relationship with the enumerators who are acquainted with the households. Many of these households request that envelopes to enclose questionnaires for submission be delivered to all households, because it is quite natural to submit the questionnaire enclosed in the envelopes if the envelopes are delivered to all households. On the other hand, most households do not think that the envelopes are indispensable for the submission of their questionnaires. It is a waste of resources to deliver the envelopes to the households who do not need them. The delivery of envelopes to all the households will cause another problem in the Census operation. If the envelopes are delivered to all the households, most households will submit the questionnaire enclosed in the envelopes. Then the personnel of municipalities instead of the enumerators will have to open the envelopes to examine the contents and to correct errors if necessary. This work will be too heavy for the personnel of municipalities to complete in a short time. Furthermore, the contents of the enclosed questionnaires will be worse than the others because the enumerators can not check them on the spot.

10 The results of the first pilot survey of the Census, which is shown in Annex 2, show that almost one hundred percent of households submit the questionnaires enclosed in the envelopes. It was proved that the accuracy of the questionnaire was not good in case that the envelopes are delivered to all households.

11 Therefore, the brochure method for enclosing questionnaires will be adopted as in the previous Censuses. But to avoid the troubles that will occur at the time of collecting questionnaires, some new measures must be introduced. The one tested at the second pilot survey was the brochure with space for “paste or seal”, by which households can easily enclose or seal up the questionnaires. The households who enclosed the questionnaires in the brochures amounted to 57%, which is too high for the municipalities’ work. Also, it was found that the brochures with space for “paste or seal” are technically difficult to procure in time.

The method being considered at present is the one of delivering a few pieces of seal to be used for sealing up the brochure to every household along with brochures of a similar form to the last Census. In this way, the enclosed questionnaires will not increase so much as the case of the envelope method, while troubles will decrease as compared with the previous way. This is to be tested in the third pilot survey.

New Measure for temporarily absent households

12 There is another problem that the enumerators face in the field enumeration. It is not always possible for the enumerators to have a contact with all households, as the number of households temporarily absent during the enumeration period is increasing. When the enumerators cannot contact the households due to a temporary absence in spite of their efforts, the present instruction is that the enumerators can fill in the questionnaires through the interview with neighbors, for the three items: number of household members, name and sex of each member. Other items are not to be obtained for these households. This causes deterioration in the quality of the Census data.

13 Then, the mail-back follow-up method was introduced in the last 1995 Census. This is the method that the supervisors put letters in the mail-boxes of such temporarily absent households asking them to mail back the completely filled-in questionnaires, after the enumerators submit the questionnaires of such households to the supervisors. Twenty percent of such questionnaires in which only the three items were filled in by enumerators through interview with neighbors were mailed back under this set-up. For the next Census, it is considered at present to strengthen this follow-up method. For example, the supervisors put clearer letters from the municipal office in mail-box asking households to mail back or bring the questionnaires to the municipal office directly.

Consideration of the tabulation plan of the Census

14 The tabulation and release plan of the last 1995 Census in Japan is listed in Annex 1. In the 1995 Census, the Bureau was able to release complete counts on industry six months earlier than that of the 1990 Census, since the coding work of the industrial classification at the major groups level, was decentralized and performed in 3,365 municipal offices all over Japan. This decentralization of the coding work of the industrial classification will be followed also in the forthcoming 2000 Census.

15 On the tabulation plan for the 2000 Census, there are two major issues to be solved. First, demographers and local governments request that the data of population by sex and age (but not necessary by industry) should be released earlier. Second, there is a matter of the 1% sample tabulation released in advance of the complete count tabulation. The latter issue is when, by whom and how the 1% sample questionnaires should be extracted. It is very difficult to solve the above issues since the personnel for data editing and the capability of data capture are limited.

16 On the first issue, there is an idea to release the results of population by sex and age which is edited by computer imputation only without manual inspection and data correction at the Statistics Center of Japan (hereinafter referred to as "the Center"). However, such prompt or additional release of population data might confuse users since the following two kinds of population data used to be released already in the traditional set-up: One is population by "Summary Sheets" which is released around after three months of the Census date as the first release. The other is population from the complete counts, which is edited by the manual and computer imputation complex and is released around after fourteen months of the Census date. Besides, it is not yet sure how many users need such prompt or additional release of population data. It is necessary to elaborate this issue more.

17 On the second issue, the following measures were taken at the last Census. Firstly, the questionnaires belonging to systematically extracted 25% of the enumeration districts were submitted from the municipal offices to the Center earlier than the rest of the 75% questionnaires. Secondly, the questionnaires of the 25% enumeration districts were captured by OMR at the Center and 4 % of the questionnaires were systematically extracted from these questionnaires by computer at the Center. The 1% questionnaires sampled by this way were processed for the 1% sample tabulation. The precision of the results, however, was not so good as compared with the results of the complete counts, especially on population by age. Therefore, the Bureau and the Center should avoid the same measures as the last Census.

18 There are three following options for the 1% sample tabulation in the forthcoming 2000 Census, which are currently being considered in the Bureau.

(1) Extract the 1% questionnaires systematically manually at the municipal offices.

This method was taken in 1985 and 1990. However, it was abolished in 1995 since the workload for the municipal offices was fairly heavy. If we return to this method, the submission of the questionnaires to the Center will be delayed considerably.

(2) Extract the 1 % sample data by computer after all questionnaires are captured by OCR at the Center.

In this way, the results of the 1% sample tabulation will be released later than in the previous Census. These data, however, may be significant as a prompt report because of being released before that of the first complete count tabulation. This way will be worthy to be considered on condition that the time-consuming data capture is finished within one year. The decentralization of the data capture to prefectural offices may be supposed as a solution. However, it is difficult to realize the decentralization at the 2000 Census, because there exist problems such as management of the questionnaires, and monitoring of the coding and data editing work.

(3) Abolish the 1% sample prompt tabulation and realize the earlier release of the complete counts.

The role of the 1% sample tabulation is to clarify the outline of the results of the Census promptly and its results have been used for the government policy making, demographic analysis, etc. So, the abolition of the 1% sample tabulation will dissatisfy the users.

19 Another issue on the 2000 Census tabulation is provision of data on such PC readable media as CD-R, CD-ROM and MO.

The traditional products of the census tabulation have been books, print-forms for the data which are released but not published in books, and magnetic tapes for both kind of data. As MT's and print-forms are not convenient, EXCEL-formatted statistical tables will be produced in the 2000 Census tabulation for easier data provision, public perusal and hard copy services.

OCR equipment, questionnaire design and printing

20 The Bureau and the Center are planning to install OCRs for the data capture for the coming 2000 Census since the currently used OMRs will be out of service in 2000. It has already been decided that OCRs are used for the data capture for the 1998 Housing and Land Survey. OCRs were already tested at the first pilot survey. According to the results of the pilot survey of the 1998 Housing and Land Survey, which are shown in Annex 3, it seems that OCRs are applicable. However, reading errors often occurred for some particular numbers. Therefore, it is necessary to take some measures to reduce reading errors. Improvement of instruction to respondents how to fill in the questionnaire is one of few answers.

21 The size of the questionnaire has been changed from B4 to A4 at the 1995 Census. There has been a claim to the A4 size questionnaire after the change, saying that it is difficult to read since letters are so small. However, the above claim will be eased due to the installation of OCRs. By using OCRs, it is possible to get more space on the questionnaire and to print the letters in darker color. In addition, the reading speed will be improved. Taking the above situations into account, the A4 size questionnaire will be used for the 2000 Census.

The CMS will make the demarcation work very efficient allowing for trial-and-error simulation in it

22 The enumeration districts for the 2000 Census are to be demarcated as of October 1, 1999. At the same time, the enumeration district maps and the enumeration district lists are made. After that, necessary corrections are done according to topological changes, and so on. As of October 1, 2000, the boundaries of the enumeration districts are finally fixed. One enumeration district includes 40 to 70 households, around 50 households on average, and is demarcated on the basis of Basic Unit Blocks. The overall revision of the demarcation of enumeration districts used to be made every 10 years, that is at the Census in the year ending with 0.

23 There are three issues in the forthcoming demarcation of the 2000 Census as follows:

(1) Control of the increase of the enumeration districts

The increase of population has not been so big in Japan due to the recent tendency of low birth rate. On the other hand, the number of households has shown a big increase due to the increase of single-person households. Since the demarcation is based on the number of households, the number of the enumeration districts will increase accordingly. In addition, the number of enumerators and the allowance for the enumerators also will increase. The increase of the enumeration districts will cause financial difficulty and make the recruitment of the enumerators difficult.

On the other hand, if the number of the enumeration districts is reduced, as a result, the number of households per one enumeration district will increase, accordingly the workload for the enumerator will increase. The countermeasures to control the increase of the enumeration districts are under consideration at the Bureau. Most likely, the average size of enumeration district will be enlarged, e.g. one enumeration district may contain 45 to 75 households say, 55 households on average.

(2) Consideration of utilization of Basic Unit Blocks

The Basic Unit Block was originally for the Census, but is now used for the Establishment and Enterprise Census. However, the following problems exist: households may not exist in the area where many establishments are concentrated. On the other hand, establishments may not exist in the residential area. Therefore, some inconveniences arose at the linkage of the Basic Unit Block data between the Census and the Establishment and Enterprise Census. Taking this situation into account, the demarcation of the Basic Unit Block is going to be revised partly at the 2000 Census.

(3) Promotion of the construction of a data base for information related to enumeration districts

Since information collected at the ED demarcation is very useful as basic information for the management of the enumerators and the tabulation, if these data are stored into a data base, it is possible to improve a series of the Census works very much. Therefore, all the information related to the enumeration districts are going to be computerized at the 2000 Census.

Closing Remarks

24 As mentioned above, the Bureau and the center are trying to utilize the OCR, the Census Mapping System, computer imputation, etc. as much as possible for the forthcoming Population Census in 2000. Besides this matter, the Bureau and the Center are making every endeavor to solve traditional issues, such as meeting users' needs (census topics), smooth collection of accurate information, appropriate demarcation of enumeration districts with respect to budgeting and well-balanced tabulation plan, since it is very important to collect raw information from households with no omissions or duplications, as well as with accuracy and timeliness in the Census operation.

Annex 1 The Outline of the 1995 Population Census in Japan

Annex 2 The Results of First Pilot Survey of the 2000 Population Census

Annex 3 Accuracy of OCR's Reading, Results of Pilot Survey of the 1998 Housing and Land Survey

OUTLINE OF THE 1995 POPULATION CENSUS OF JAPAN

I. General Features of the Population Census of Japan

1. The Population Census of Japan has been conducted every five years since October 1, 1920, except for 1945 immediately after World War II. (In place of 1945, an extraordinary census was conducted in 1947.) The 1995 Census is the sixteenth in its history.
2. There are two types of the Population Census in Japan: the full-scale census and the simplified census. The former type is conducted in the years (A.D.) ending with the digit of 0, while the latter type is conducted in the years ending with the digit of 5. Both types cover the same population, that is, all persons living in Japan, but the number of topics covered differs between the two types. In the full-scale census, 22 topics are included, while in the simplified one, 17 topics are included.

II. The Execution of the 1995 Population Census

Legal Basis

3. The 1995 Census was conducted as of 0:00 a.m. of October 1, 1995 in accordance with the Statistics Law (Law No. 18, 1947) and the following orders:
 - 1) Cabinet Order Concerning the Population Census (Cabinet Order No.98, 1980);
 - 2) Regulations on Execution of the Population Census (Order of the Prime Minister's Office, No.21, 1980);
 - 3) Order Concerning the Standards for the Demarcation of the Population Census Enumeration Districts (Order of the Prime Minister's Office, No.24, 1984).

These law and orders stipulate the coverage, the topics and the enumeration procedures of the Census. They also require all the persons covered by the Census to respond to the enumeration, and the persons engaged in the Census to keep in confidence the information obtained in the process.

Area Covered by the Census

4. The Census has covered the entire territory of Japan, except for the following islands:
 - Habomai Islands, Shikotan Island, and Etorofu Island;
 - Takeshima in Goka-mura, Oki-gun, Shimane-ken.

Persons Enumerated in the Census

5. In earlier censuses, the persons enumerated in the Census had been counted at the places where they were at the time of the Census on the basis of "de facto" or "present-in-area" concept. But since the 1950 Census, they were counted at the places where they usually lived as of the census date based on the "de jure" or

"usual residence", concept.

6. In the 1995 Census, all the persons who had been living or would be living in Japan, for three months or more are to be enumerated. But the following categories of persons were excluded from the coverage:

- Foreign diplomatic corps and consular corps, their suite and dependents;
- Foreign military personnel, including both military corps and civilians, and their dependents.

Topics to Be Investigated

7. The 1995 Census included the following 17 questions:

(For individuals)

- (a) Name
- (b) Sex
- (c) Year and month of birth
- (d) Relationship to the head of household
- (e) Marital status
- (f) Nationality
- (g) Labour force status
- (h) Name of establishment and kind of business (industry)
- (i) Kind of work (occupation)
- (j) Status in employment
- (k) Place of work or school

(For households)

- (a) Type of household
- (b) Number of household members
- (c) Type and tenure of dwelling
- (d) Number of dwelling rooms
- (e) Area of floor space of dwelling
- (f) Type of building and number of stories

In the full-scale census that was conducted in 1990, the following topics also were investigated:

(For individuals)

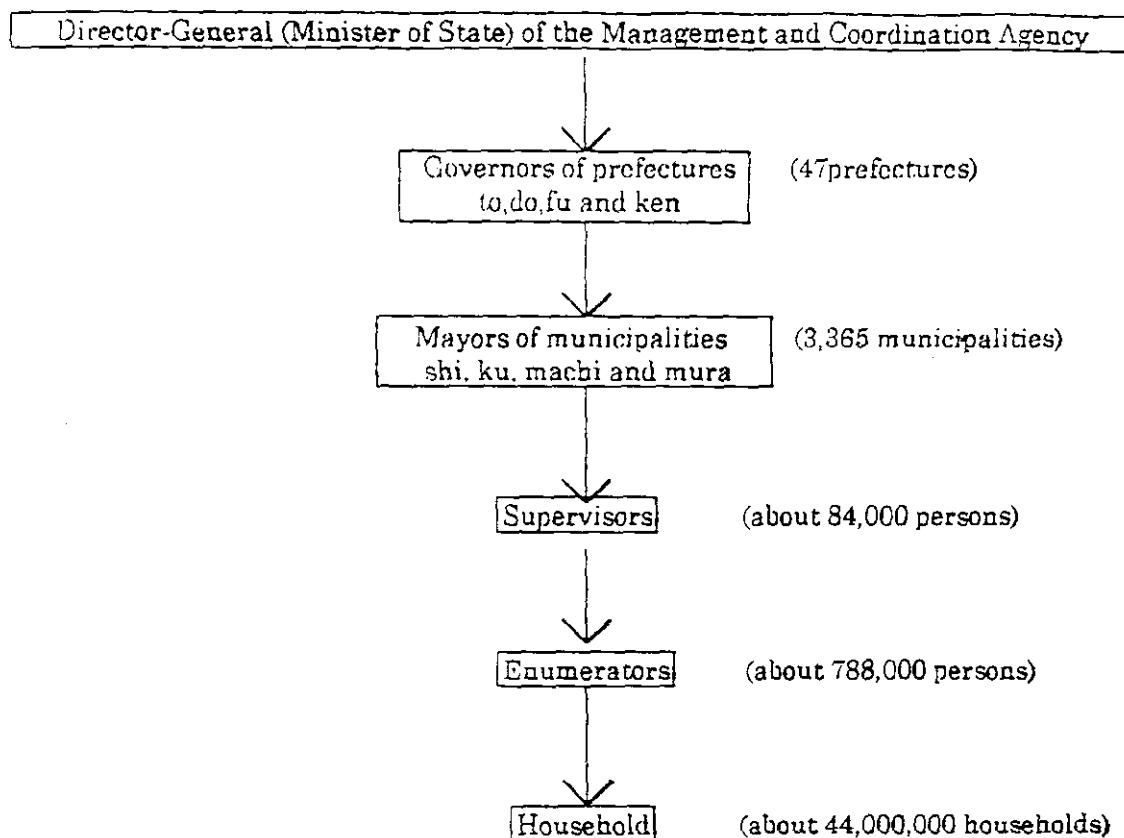
- (a) Place of residence 5 years ago
- (b) Education
- (c) Transportation to the place of work or school
- (d) Commuting time to the place of work or school

(For households)

- (a) Source of household incomes.

Census Organization

8. The 1995 Census was conducted under the direction of the Statistics Bureau, Management and Coordination Agency through the following channel:



9. The Statistics Bureau was responsible for planning, preparation of documents, and supervision of the local operations. The Statistics Center was responsible for the tabulation of the data, and the results are released and published by the Statistics Bureau.
10. In each prefecture, the Statistics Division took charge of the census operation. The work of the Statistics Division included distribution of materials for the Census to the municipalities, training of municipal census staff, and collection and examination of the census returns from the municipalities.
11. The municipal offices executed the work directly related to the field operation, including demarcation of enumeration districts, recruitment of supervisors and enumerators, training of the supervisors and enumerators, and examination of the census returns before submission to the prefectures.
12. About 788 thousand enumerators, and 84 thousand supervisors undertook field operation throughout Japan. They were all appointed as temporary government officials by the Director-General (Minister of State) of the Management and Coordination Agency. Supervisors were responsible for supervising the enumerators and the examination of the census returns.

Demarcation of Enumeration districts (EDs)

13. The Enumeration Districts (EDs) were designed to define the areas assigned to the enumerators. The EDs also served as basic units for compiling small area statistics and area statistics and as sampling units for various sample surveys.

14. There were three kinds of EDs:

- Ordinary EDs, constituting about 95% of all the EDs;
- Water EDs, covering the harbours and the lake;
- Special EDs, having extremely small population or special institutions.

Ordinary EDs normally comprised from 40 to 70 households, and on the average about 50 households.

15. The EDs were demarcated as of October 1, 1994 one year before the Census date. In case amendments were needed for unavoidable reasons (e.g. change of municipal boundaries, significant change in population after the demarcation, etc.), they were taken into account. The boundaries of EDs were finally fixed as of the Census date.
16. From the 1990 Census, a new concept of unit was introduced in demarcating the EDs. It has been called Basic Unit Blocks (BUBs), which were demarcated by clear and almost permanent landmarks, such as streets and rivers, etc. In the urban area, a BUB normally has corresponded to a street block. BUBs have been served as permanent and small unit area that have corresponded to the address designations.
17. The BUBs are used both as units for compiling small areas statistics and as units for defining the EDs. Because of the way BUBs are defined, the comparability of small area statistics over time will be improved. The small area statistics can be better connected to the address designations. An ED may be defined as a BUB or a combination of BUBs. In some cases, a BUB may be split to make some EDs.

Enumeration Procedure

18. The Census of Japan has employed the delivery-collection procedure. For every enumerator, his/her assignment area was indicated by a large-scale ED map prepared in advance. From 23 to 30 September 1995, the enumerator visited all the households in the EDs to which he/she was assigned. He/she delivered the households the questionnaires and leaflets giving instructions for filling. On this occasion, the enumerator recorded the name of the head of the household and the number of household members on the "List of Households," and at the same time, the location of the household was marked with the household number in the "Enumeration District Sketch Map" manually drawn by the enumerator. Also, from September 20th to the 22nd, leaflets had been distributed to each household with a leaflet requesting cooperation.
19. Within eight days after the Census date, the enumerators visited the households again to collect the completed questionnaires. At that time, the enumerators checked the questionnaires with the list of households previously recorded and examined the contents of the questionnaires for possible omissions or errors. In addition, they also filled in the enumerator's items in the questionnaires.
20. In case a questionnaire cannot be filled by the household members themselves for such reasons as long absence, the enumerator may report to ask the neighbors the names, sex, and number of household members of the absent households, and fill in the questionnaires. In addition, for each household for which this method had been adopted the supervisor requested to send the completed questionnaire by mail later in order to obtain more detailed responses.

III. Tabulation and Publication of the Results

21. All the questionnaires were accumulated at the Statistics Center for processing by February 1996. They were read by optical mark readers (OMRs), and tabulated by using the computer system. The tabulated results had been officially released by the Statistics Bureau. The tabulations and releases of the results are done in the following groups of data:
 - 1) Preliminary Counts of the Population;
 - 2) Prompt Sample Tabulation;
 - 3) The First Complete-Count Tabulation;
 - 4) The Second Complete-Count Tabulation;
 - 5) The Third Complete-Count Tabulation;
 - 6) Detailed Sample Tabulation;
 - 7) Tabulation on Place of Work or Schooling;
 - 8) Tabulation by BUB and Administrative District;
22. The Preliminary Counts, which were based on the summary sheets prepared at the municipalities, gave the population by sex and the number of households by municipality, prefecture, and for the whole country. The Preliminary Counts were released at the end of December 1995.
23. The Prompt Sample Tabulation, which was based on 1% sample questionnaires, gave the overview of the population structure of the country and the prefectures. But the detailed regional data at the municipality were not made available due to the sampling errors. The results were released in June 1996.
24. The complete count tabulation was performed in three phases. In the first phase, the topics of tabulation were limited to the basic demographic and household characteristics, such as sex, age, marital status, nationality, household type, housing conditions, etc. These topics were all coded by the households themselves or the enumerators, and they were processed without any manual coding by the central staff. The results of the first phase tabulation were released in November 1996.
25. The second phase included tabulation by industry (major group), labour force status, status in employment, place of work or study, etc. And the third phase included tabulation by occupation (major group). The second and the third phases were separated from the first phase because industrial and occupational coding by the central staff required much time, and the statistics of the basic demographic and household characteristics were needed much before the statistics on industry and occupation. The second complete-count tabulation was released by January 1997, and the third complete-count tabulation will be released by March 1998.
26. The whole tabulation of the 1990 Population Census is to be completed by July 1999.

IV. Preparation for the 1995 Census

Planning Committee and the Headquarters

27. In preparation of the 1995 Census, the Planning Committee for the 1995 Population Census was established within the Statistics Bureau and the

Statistics Center in October 1991. Under this committee, four subcommittees were established to prepare plans on specific matters.

28. The Planning Committee was reorganized in October 1994 to become the Headquarters for Execution of the 1995 Population Census. The Headquarters consisted of seven divisions and twelve units covering a wide range of different responsibilities. Many prefectures and municipalities also established similar organizations for mobilizing the staff of the entire offices to execute extremely large scale of the Census operation.

Pilot Surveys

29. Four pilot surveys were conducted in order to test the enumeration procedures and design of the questionnaires. Three pilot surveys were conducted in some selected municipalities from 1992 to 1993. A full dress rehearsal was conducted in all the 47 prefectures in 1994. The final plans were drawn on the basis of the results of these pilot surveys. Each pilot surveys aimed at testing the following points:

1) The First Pilot Survey

- Method of confirming those living in the household and contacting the household
- Census method and method of protecting privacy
- Method of arranging census workers
- Census form style and design

2) The Second Pilot Survey

- Verification of accuracy of census methods and results
- Content of enumeration activities and amount of workload
- Safety measures for census workers
- Census items and census form design
- Coding of industrial classification by local staff

3) The Third Pilot Survey

- Standard and design of census forms
- Safety measures for census workers
- Census method and method of protecting privacy
- Method of surveying those not at home and accuracy of results

4) Full dress Rehearsal

- Census method and treatment of those who did not cooperate with the census
- Arrangement of census workers
- Method of marking industry categories for early tabulation
- Style of census forms and other documents related to the census

Study on Improvement of the Enumeration Procedures

30. In recent years, there are many phenomena which create unfavorable conditions for conducting the Population Census. For example, because of the increase in awareness of privacy, the number of persons unwilling to cooperate in the surveys and censuses is increasing. The number of households which cannot be contacted during the daytime is also increasing due to increase of one-person households and higher rate of labour participation of women. There are worries about accidents happening to the enumerators, because there are many cases

where enumerators have to work until late at night. In order to overcome such difficulties, the Statistics Bureau has been holding several meetings with the staff of prefectural Statistics Divisions to discuss and consider possibility of improving the enumeration procedures. As prefectures and municipalities play very important roles in the field work of the Census, cooperation between the Statistics Bureau and the prefectural Statistics Divisions is very important in preparing for the Census.

Meetings with Other Ministries

31. In order to obtain from various ministries and agencies the opinions and the requests on the plan of conducting the 1995 Census, the Statistics Bureau called four meetings of representatives of ministries and agencies within the government. The final one was held in April 1995, and the Statistics Bureau requested all the ministries and agencies to cooperate for smooth execution of the 1995 Census.

Statistics Council

32. The Statistics Council is an advisory body to the Director-General of the management and Coordination Agency (MCA) on various important matters concerning statistics. In June 1994, Director-General of MCA requested the Council for opinions concerning the plan for the 1995 Population Census. The Council referred this matter to the Subcommittee on Population and Labour Statistics. The Subcommittee met six times since then, and finally in November 1995 the Council submitted the report of opinions, in which the Council endorsed the plan in general terms and added some observations.

V. Methods adopted in the 1995 Population Census

Method of securing accuracy of census results

33. With the increase of absent households, the increasing variety of types of dwellings and the increase of foreigners who cannot speak Japanese etc., it is difficult to conduct a reliable census that meets its aims no omissions or repetitions. Because of this, for example, in order to make the accuracy of the census results definitive, we employed the method of asking households that were absent at the entire period of the census to return the census forms by mail after they had filled them out.

Early announcement of census results

34. In order to reflect rapidly changing socio-economic conditions, there has been a strongly made request for the census result to be announced early. In order to accomplish this, the method of marking industries (large categories) and itemizing them in cities towns and villages was employed. We are especially trying to announce the statistics related to employment earlier than usual.
35. Along with compiling statistics about administrative districts of cities, villages and towns which have been subdivided into even smaller units, we are considering measures to make these results highly useful.

Prevention of accidents etc. during census

36. Because of the increase of absent households during the daytime, there were

many cases where the census workers visited households at night. As a result, there were concerns that accidents might occur to the census workers while conducting census activities. To cope with the problems, arrangements were made so that a census worker could have another census worker accompany with him/her whenever necessary for visiting households.

VI. Post Enumeration Survey

37. The Post enumeration Survey (PES) was conducted as of 15 November 1995 in order to evaluate the accuracy in the coverage of the Census and reliability of some topics of the Census. The sampling ratio of the PES was 1/500. All the households living in about 1,550 EDs are surveyed.
38. The enumerators employed in PES were selected and assigned to the sample EDs so that no PES enumerator might be assigned to the same ED of which he/she took charge at the time of the Census.
39. The questionnaires of the PES are to be compared with those of the Census to identify whether a person was correctly enumerated in the Census, or enumerated at two or more places, or not enumerated at all, and whether the answer in some topics corresponds between the Census and the PES, or not.

RESULTS OF FIRST PILOT SURVEY OF THE 2000 POPULATION CENSUS

TABLE. Number of households and its percentage by area (what was delivered) and way of submitting questionnaire

Area and What was delivered	Way of submitting questionnaires	Number of households	Proportion (per cent)	
Area where envelopes were delivered	Total	2,252	100.0	
	Submitting the questionnaire in the envelope	2,239	99.5	
		sealed up	851	37.4
		not sealed	1,388	62.1
Area where brochures were delivered	Total	2,355	100.0	
	Submitting the questionnaire envelopped in the brochure	190	8.0	
	Submitting the questionnaire without being envelopped	2,165	92.0	

ACCURACY OF OCR'S READING
RESULTS OF PILOT SURVEY OF THE 1998 HOUSING AND LAND SURVEY

WRITTEN NUMBER	OCR'S READING														
	CAPTURED NUMBER.												CORRECT	IN-CORRECT	UNABLE TO READ
	TOTAL	0	1	2	3	4	5	6	7	8	9	BLANK			
TOTAL	0	100.00	99.24	0.04				0.03		0.03	0.01	0.01	99.24	0.13	0.64
	1	100.00		99.75		0.01						0.01	99.75	0.01	0.24
	2	100.00	0.01	0.01	99.60	0.04				0.01			99.60	0.08	0.32
	3	100.00	0.03	0.02		99.46		0.06		0.02	0.08	0.05	99.46	0.25	0.28
	4	100.00					99.37	0.02			0.04	0.04	99.37	0.10	0.53
	5	100.00				0.04	0.06	99.20	0.04		0.04		99.20	0.18	0.62
	6	100.00	0.03	0.03			0.06	0.06	99.13		0.06		99.13	0.23	0.64
	7	100.00	0.08	0.08		0.04	0.04			99.17		0.15	99.17	0.38	0.45
	8	100.00	0.13		0.04		0.04		0.04		99.22	0.04	99.22	0.30	0.48
	9	100.00		0.05			0.05			0.11	0.05	98.76	98.76	0.27	0.97
	BLANK	100.00	0.00	0.01			0.00		0.00			99.97	99.97	0.01	0.02
WRITTEN BY ENUMERATOR	0	100.00	99.92										99.92		0.08
	1	100.00		99.83								0.01	99.83	0.01	0.16
	2	100.00		0.03	99.81	0.03							99.81	0.05	0.13
	3	100.00				99.74		0.03		0.03			99.74	0.06	0.21
	4	100.00					99.73						99.73		0.27
	5	100.00				0.07		99.80					99.80	0.07	0.13
	6	100.00							99.63				99.63		0.37
	7	100.00		0.10		0.10	0.10			99.33		0.19	99.33	0.48	0.19
	8	100.00							0.12		99.38		99.38	0.12	0.50
	9	100.00		0.13			0.13			0.26		98.46	98.46	0.51	1.03
	BLANK	100.00		0.00								99.98	99.98	0.00	0.02
WRITTEN BY HOUSEHOLD	0	100.00	99.08	0.05				0.03		0.03	0.02	0.02	99.08	0.16	0.76
	1	100.00		99.56		0.02							99.56	0.02	0.42
	2	100.00	0.03		99.37	0.06				0.03			99.37	0.12	0.52
	3	100.00	0.07	0.03		99.14		0.10			0.17	0.10	99.14	0.48	0.38
	4	100.00					99.09	0.04			0.07	0.07	99.09	0.18	0.74
	5	100.00				0.03	0.09	98.93	0.06		0.06		98.93	0.24	0.83
	6	100.00	0.04	0.04			0.08	0.08	98.90		0.08		98.90	0.34	0.76
	7	100.00	0.12	0.06						99.07		0.12	99.07	0.31	0.62
	8	100.00	0.20		0.07		0.07				99.14	0.07	99.14	0.40	0.47
	9	100.00									0.09	98.98	98.98	0.09	0.92
	BLANK	100.00	0.00	0.01			0.00		0.00			99.97	99.97	0.01	0.02

Note: The sample size is 311,380 households.